

MONTREAL™ WITH DENVER F3 720MM / 920MM / 1120MM

Using the CEVB (Controlled Ethanol Vapour Burning) technology, Decoflame has created Montreal with the Denver F3 burner, an automatic burner with built-in casing.

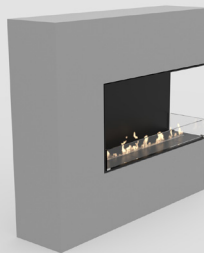
Featuring the e-Ribbon Fire™ burning system, it is suitable where safety and ease operation are in focus.

Montreal can also be ordered with the following burners:

- A. Denver F6 Burner
- B. Hybrid Mist
- C. Manual Burner



Open to front



Open to front and right side



Open to front and left side



Open to front and back



Open to front, back and right

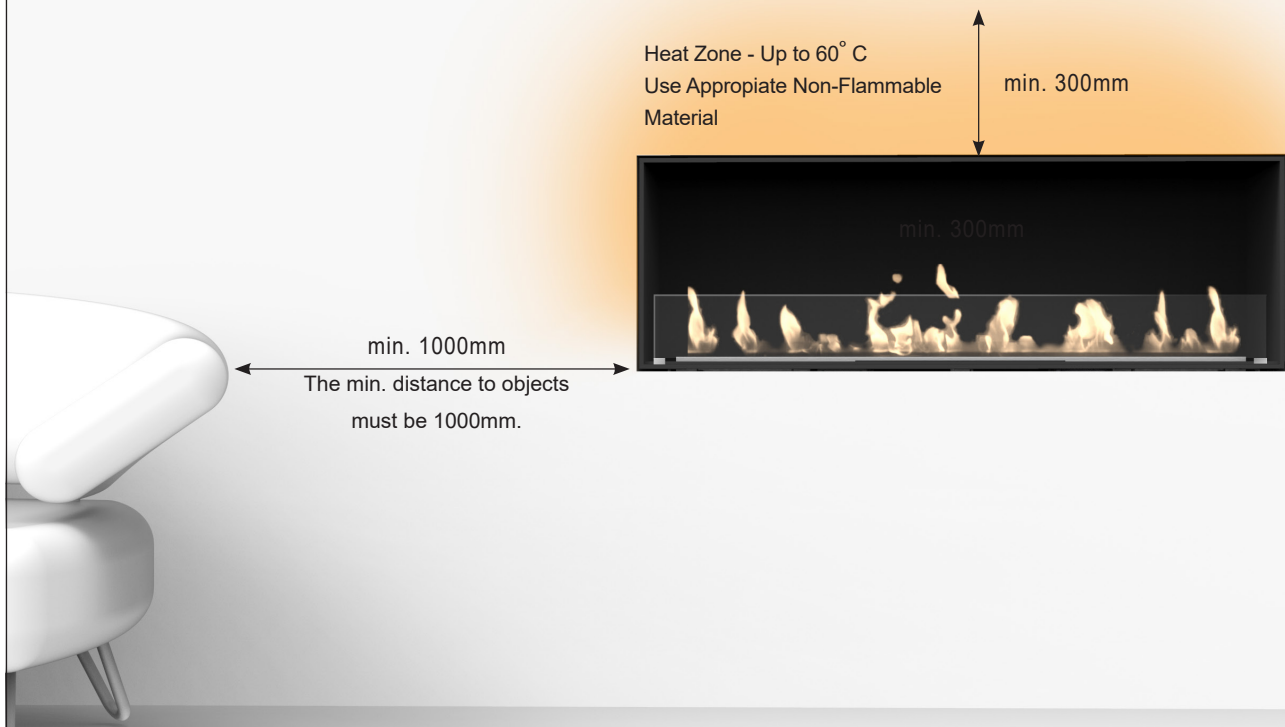


Open to front, back and left



Open to front, right and left

Heat-Zone



Location under TV-screen

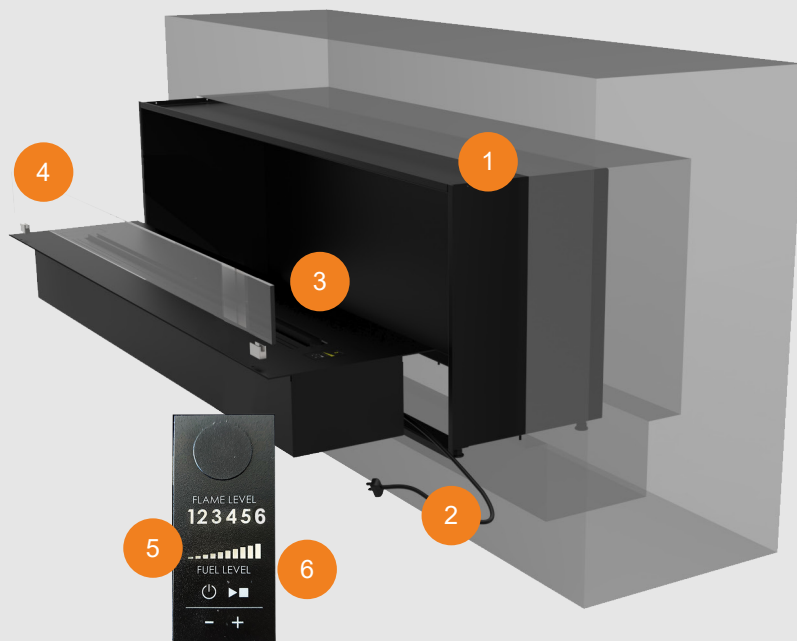
It is NOT recommended to place TV-screens or valuable paintings over the fireplace as the rising hot air can damage the materials.

If you decide to use a construction containing a TV-screen over the bio fireplace, the following instructions must be followed, otherwise please consult your retailer or Decoflame.



It is imperative to follow the indications in the User's Manual concerning the installation of decorative or electronic items above the fireplace.

INSTALLATION





Step 1: Make sure that the dimensions of the cut-out correspond to the measurements indicated in the technical drawing received with your fireplace. *Everything must be in level.*

Step 2: Connect the fireplace to an electrical power supply.

Step 3: Recess the fireplace into the wall cut-out according to the indications in the User's Manual.

Step 4: Place the glass screen/s on to the top pin holders.

Step 5: Turn on  the fireplace. Fill in the right amount of bioethanol by verifying the level on the indicator.

Step 6: Start the fireplace by pressing the Play/Start  button on the control panel.

Wait around 3 minutes before the fireplace is fully operational.

Enjoy your fire.

Features

- e-Ribbon™ technology
- Safety sensors / Safety chamber
- Fuel Level Indicator / Flame Level Indicator
- Remote control included
- External Pump included
- 3 flame levels
- 8mm aluminium casing and baseplate
- No chimney required - no smoke, ash or soot
- Safety chamber
- Glass screen ordered (Full and/or low glasses)

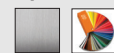
Optional

- Made to measure
- Brushed and brushed stainless steel
- RAL colours

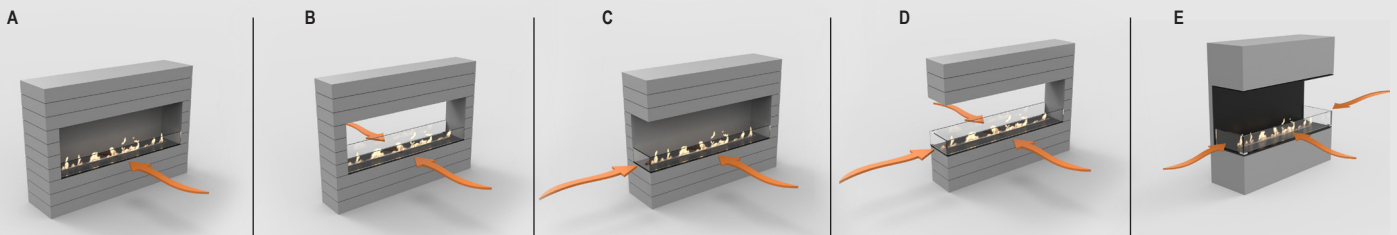
Standard finishes



Optional



Glass shield



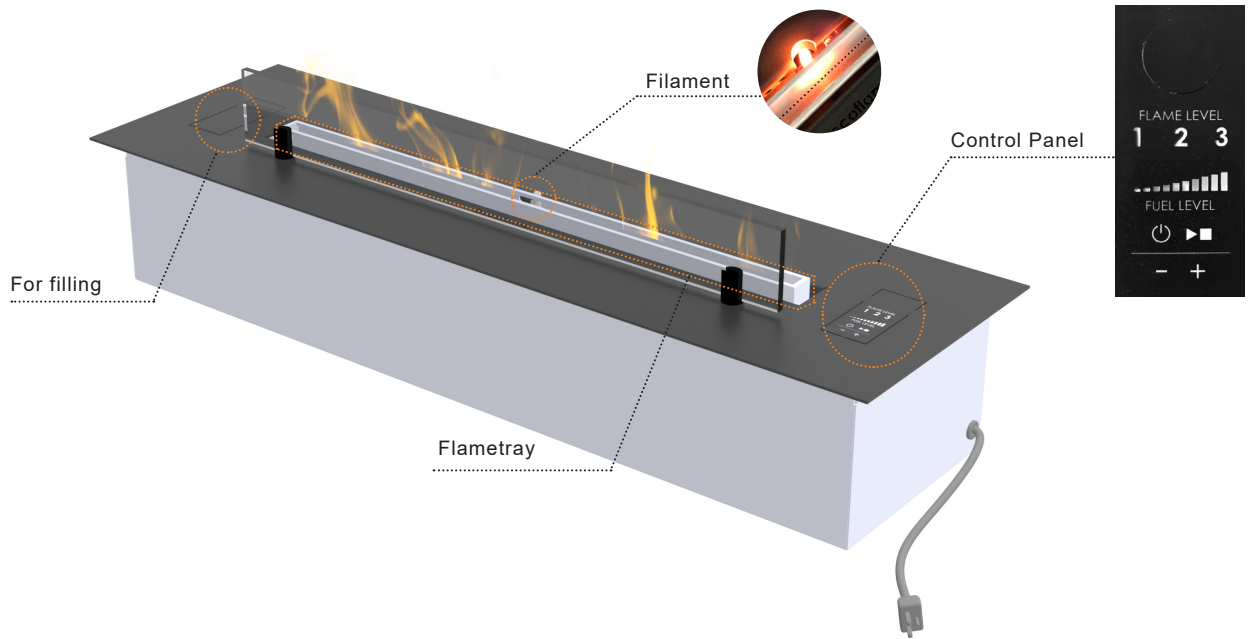
Decoflame strongly recommends installing glass shields in order to protect the flame from draught, while keeping it vivid.

Model A comes with one low glass.

Model B comes with either two low glasses or one full glass and one low glass.

Model C - E can be ordered with low glass. We recommend it as illustrated for the best result regarding design and operation.

DENVER F3 BURNER



Step 1	Turn on the electronics of your Denver F3™ by pressing the button.
Step 2	Fill in the right amount of bioethanol in the fuel tank by verifying the level on the fuel level indicator.
Step 3	To ignite the fireplace: Press the button on the control panel. After about 3 minutes, the first flames will appear around the centre of the flame tray.
Step 4	When the filament no longer is red/glows (approx. 10 min) it is possible to adjust the flames.
Step 5	To switch off the fire at any time – also during the warming-up phase – press the button on the control panel. The flames will disappear within few minutes.

Model	Sizes	Liter	KwH
Denver F3 620	620x170x240mm	3.8L	09.-2.6
Denver F3 720	720x170x240mm	4.0L	1.2-3.2
Denver F3 920	920x170x240mm	5.8L	1.6-4.3
Denver F3 1120	1120x170x240mm	7.2L	2.1-5.7



Remote Control included



External Fuel Pump included